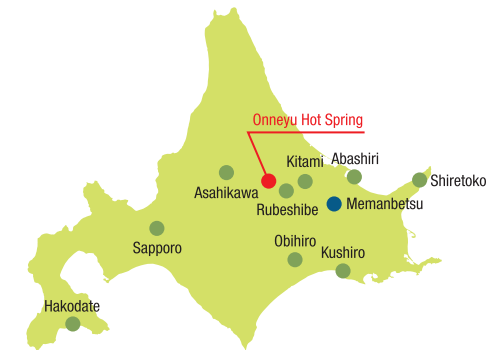




ツツジ群落 水族館

場



● Distance and required time to Onneyu Hot Spring

Sapporo	Approx. 250 km	5 hrs
Hakodate	Approx. 500 km	10 hrs
Asahikawa	Approx. 130 km	2 hrs 20 min
Obihiro	Approx. 145 km	2 hrs 45 min
Kushiro	Approx. 160 km	3 hrs
Memanbetsu	Approx. 80 km	1 hr 20 min
Abashiri	Approx. 90 km	1 hr 30 min

Kitami City Rubeshibe General Branch Office Industry Section

TEL 0157-42-2430

<http://www.city.kitami.lg.jp/>

Onneyu Hot Springs Tourism Association / Inns Association

111-2 Onneyuonsen, Rubeshibe-cho, Kitami-shi, Hokkaido 091-0170 Japan

TEL 0157-45-2921

FAX 0157-57-1505

Email onneyuonsen@extra.ocn.ne.jp

<http://www.onneyuonsen.jp/>

Onneyu

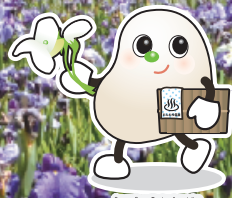
Search



“Relaxing” “Healing”

Village of fresh hot spring water straight from the source

Onneyu Hot Spring



Onneyu Hot Springs Village
Shirohara-mametsu

Hotel Tsutsujiso
Natural Onsen
TEL.0157-45-3355 FAX.0157-45-2130

Sankoso
Kitami Onsen (Ponyu) Ryokan
TEL.0157-42-2288 FAX.0157-42-2289

Shiobetsu Tsurutsuru Onsen
Ryokan
TEL.0157-45-2225 FAX.0157-45-3097
<http://www.tsuru2.net/>

Oehonke
Bihaku no Yu Inn
TEL.0157-45-2711 FAX.0157-45-2713
<http://www.oehonke.com/>

Yumefusen
Takinoyu Center
TEL.0157-67-4126 FAX.0157-67-4127
<http://www.takinoyu.jugem.jp/>

Rubeshibeso
Ryokan
TEL.0157-42-3642 FAX.0157-42-3731
<http://rubeson.with-planning.jp>

Onneyu Hotel
Shiki Heian no Yakata
TEL.0157-45-2211 FAX.0157-45-2159
<http://www.onneyu-hotel.jp/>

Accommodation Information

Snow Story
Onneyu Hot Springs Village
Early February

Triangle art objects illuminated with 10,000 lights are placed at Onsen Yume Hiroba venue on the Muka River banks and Onneyu Hot Spring city area. In February, riverside festivals like the “Yukihanaabi (Snow Fireworks)” are held. Enjoy the cold Hokkaido winter and its magnificent nature.

Firefly Festival
Takinoyu
Mid July to Late August

A festival with a focus on fireflies which local volunteers have cultivated. The climax is from June to August, when great numbers of fireflies fly, impressing visitors. The festival is held mid-July to late August. Guided tours of firefly walks by volunteers are available, and vendor stalls line the street.

Hot Spring Festival
Mikoshi Kawatogyo
The 1 Saturday and Sunday in August

A big event of the summer at Onneyu hot spring resort. Above all, “Mikoshi Kawatogyo”, where participants parade in the Muka River while carrying the Mikoshi portable shrine, is the special highlight. Many other events are also held, such as rocket fireworks and a bonfire.

Azalea Festival
Early May

Flowers in full bloom coloring the village At Tsutsuji Mountain, located to the east of the hot spring district, there is a large community, about 280,000 trees, a Hokkaido Natural Monument, and Ezomurasaki Tsutsuji (azalea), painting the mountain surface in purple. Tsutsuji Matsuri (Azalea Festival) is held in early May and various events are held.





Village of fresh natural hot spring water, Bihaku no yu (skin-whitening hot spring) to heal your mind and body

Onneyu Hot Springs Village welcomes our guests with 3 kinds of fresh natural hot spring water.



The origin of the name, Takinoyu (hot spring of waterfall) is said to come from the abundance of hot water. In the Ainu language, it is called the Shikerebetsu District. The water quality is very smooth and slippery, and loved by everybody. However, please be careful not to slip when bathing a baby.

Simple sulfur hot spring (hypotonic, alkaline, high-temperature hot spring)

Takinoyu Hot Spring



Not only it is fresh natural hot spring water from the source, but it has an extremely high reducing property. Because of this, this hot spring has received the official guarantee from the Hot Spring Professor, Tadanori Matsuda, as a rare hot spring in Japan with rejuvenating, skin brightening and beautifying effects.

Simple alkaline hot spring (hypotonic, alkaline, high-temperature hot spring)

Onneyu Hot Spring



The name, Pon came from the Ainu language meaning “small” as opposed to Onne meaning “big”. It is said to be effective in treating skin conditions such as burns. People from other prefectures as well as neighboring areas visit here for a hot-spring remedy.

Simple alkaline hot spring (emollient hypotonic hot spring)

Ponyu Hot Spring

1 Onneyu Onsen, Mountain Aquarium Aquarium of the Northern Land

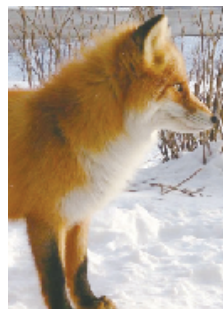


They have the world first river water tank that freezes, and Japan's first look-up type “waterfall basin tank” which can only be seen here. You can also get up close and see huge tropical fish grown in “the magic hot spring water” and powerful nature of ito.

- Closed: April 8 - 14, December 26 - January 1
- Hours: April 1 - October 31 08:30-17:00
November 1 - March 31 09:00-16:30
- Admission: Adults 670 yen, Jr. High School Students 440yen, Elementary School Students 300 yen
- Annual Pass: Adults 1,000 yen, Jr High School Students 660 yen, Elementary School Students 450 yen
- Group discounts apply for 20 or more people

●Contact: Tel (0157)45-2223
●<http://onneyu-aq.com/>

4 Kita-Kitsune (northern fox) Ranch

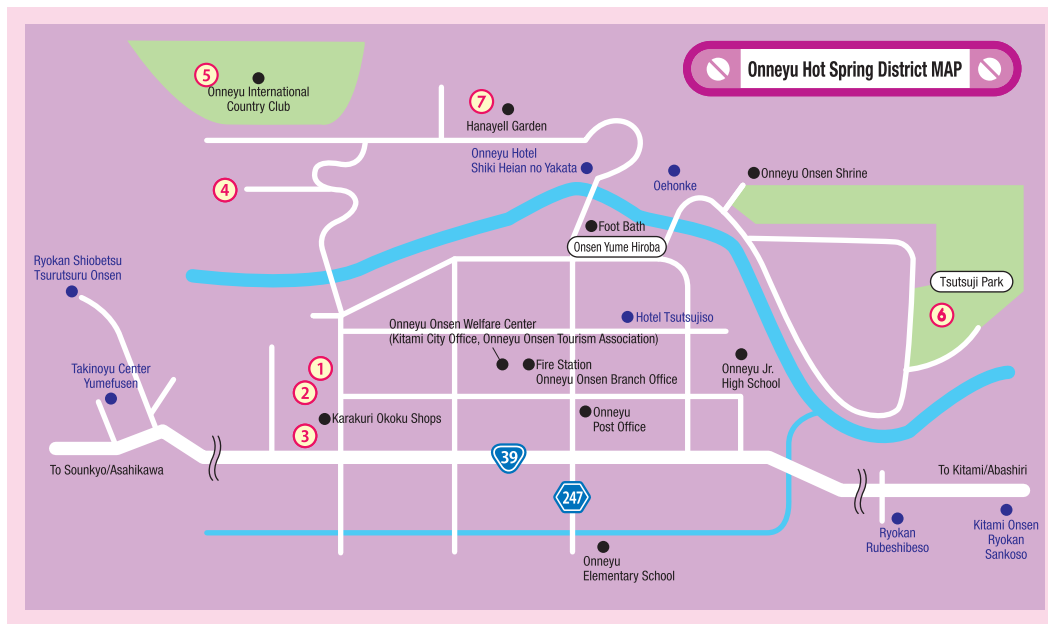


This is the only Kitakitsune (Ezo red fox) pasturage ranch in Japan. You can see adorable scenes of approximately 70 Kitakitsune foxes playing around and begging for food from the promenade in the forest that keeps its original nature setting.

- Open every day
- Hours: 08:00-18:00 (April 1 - October 31)
09:00-16:00 (November 1 - March 31)

●Admission: Adults 500 yen, Elementary School Students 300 yen (Group discounts available)

●Contact: Tel (0157)45-2249
●<http://kitakitsune-farm.com/about/>



3 Roadside Station Onneyu Hot Springs

The parking area of the roadside station has a large parking lot and a large restroom (Clean Plaza Onneyu), works as an oasis for 250,000 passing vehicles each year, and provides a variety of information.

〔Tourist Information has been re-opened!
Onneyu Onsen sightseeing has become a more familiar topic.〕

●Contact: Tel (0157)45-3373

5 Onneyu International Country Club



Golf

5 minutes from the hot spring district by car. A course layout with a full of variety. You can have the satisfaction of enjoying yourself in full here. Abundant Onneyu hot spring water is poured into the bath at the club house, soothing your fatigue from a long day of golf.

●Contact: Tel (0157)45-2531 (Onneyu International Country Club)
●<http://www.oehonke.com/golf/>



6 Onneyu Onsen Tsutsuji Park



Park Golf

The “Iris Course” is set out with 9 holes × 4, 36 holes, which can be enjoyed by all ages, from children to elderly. It is free of charge. There is an authentic campground nearby and it is also free of charge.

●Contact: Tel (0157)45-2235 (Park Golf Secretariat)

2 Kamurin no Yakata



This consists of three spaces, including: the “Kamurin Shop” which exhibits and sells local specialties, “Kamurin World” where you can play with wooden playground equipment, and “Craft Experience Atelier” where you can enjoy making wood crafts.

- Closed: April 8 - 14, December 26 - January 1
- Hours: April 1 - October 31 08:30-17:00
November 1 - March 31 09:00-16:30
- Fee: Kamurin World: Adults 270 yen, Elementary/ Jr. High School Students 130 yen
Craft Experience Atelier 560 yen/once



Symbol Tower Kamurin

“Kamurin”, the world's biggest cuckoo clock tower, which features the symbol of peace, a dove, is the automaton tower of dreams and hopes.

- Hours: Late April - November 3 08:30-17:00

●Contact: Tel (0157)45-3373

7 Nene-no-Oka Garden



It is about 3 minutes by car from the Onneyu hot spring resort. You can have a time of healing and relaxation in this garden where different flowers come into bloom from season to season.

●Contact: (0157) 42-2430 for more information.